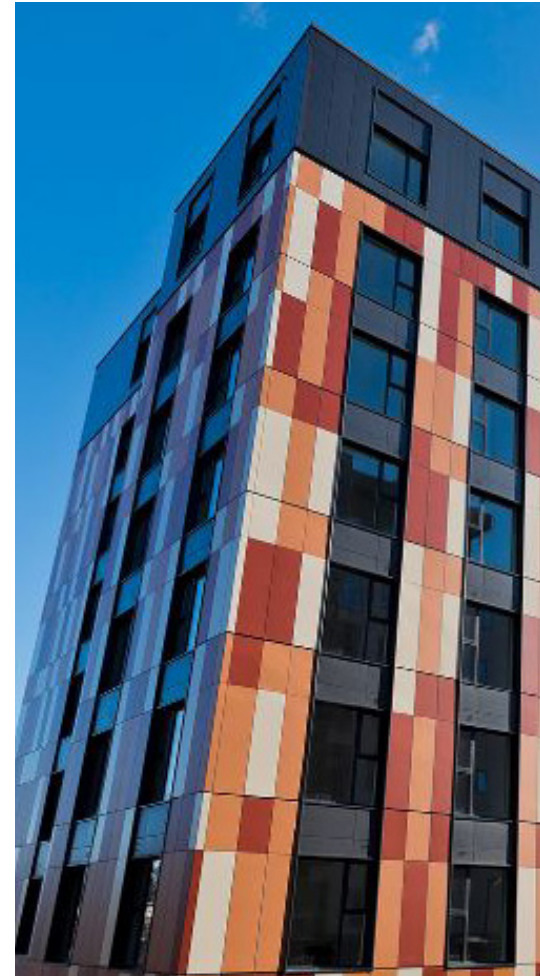




Cardinal Court

Cardinal Court was a stalled development that had stood unfinished for seven years due to the administration of a previous developer.

Location: **Oldham**



Cardinal Court - Oldham

Cardinal Court was a stalled development that had stood unfinished for seven years due to the administration of a previous developer. It had turned into a political issue with residents repeatedly raising their concerns. The contractor CPUK were increasingly under pressure to get the project completed ahead of schedule.

Project Summary

We provided the primary access to the site through erecting a mast climber access and support scaffold in and around the mast climber apparatus. The mast columns were supported using suitably braced RMD soldier members immediately beneath the mast columns.

Value Engineering

Due to the sloping ground conditions, our design team had to provide a solution to structurally support the mast climber and mast column(s) within the external access scaffold to the base of the mast climber.

Head Office

Enigma Industrial Services Ltd
Hawthorn House
Woodlands Park
Ashton Road
Newton-le-Willows
WA12 0HF

Tel: 0330 678 1199
Email: info@enigma-is.com
Web: www.enigma-is.com

