



## Slough Reservoir

We are now in our sixteenth year as the framework contract supplier for SSE in Slough, fully supporting them with all of their scaffolding requirements.

Location: **Slough**





## Slough Reservoir

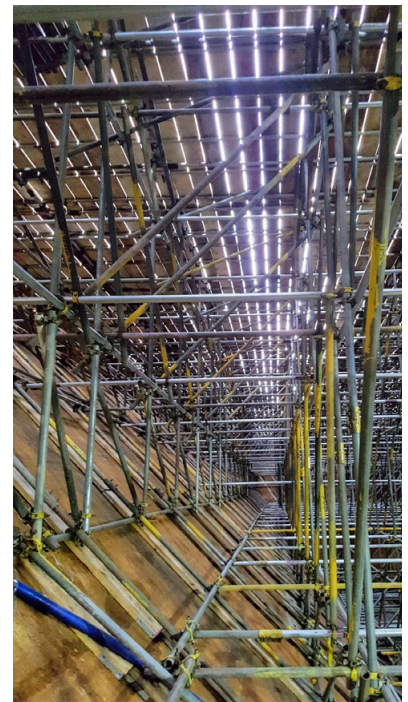
We are now in our sixteenth-year partnership with SSE in Slough, fully supporting them with all of their requirements, and keeping the site generating electricity for the local area. The images above show our provision of scaffolding solution as part of their Slough reservoir re-roof and upgrade project. Built-in 1931, the reservoir holds 3.5 million gallons of water and serves the 'Slough community and Trading Estate.

### Project Summary

The initial requirement involved a large internal birdcage to the east side of the reservoir covering one half of the pre-war WW2 structure. However, the project soon required access to all areas before a successful handover could be achieved. The works required good coordination and communication between all trades as the access and egress was at first limited to a tiny inspection hatch. The structure was designed as a Birdcage to accommodate the access required to replace the roofing and held 240-tonne of materials with 1000m2 of scaffold boards.

### Value Engineering

Our in-house design team created solutions for the vertical sidewalls sloped at 45 degrees; the design brief had to overcome this challenge and allow for the progressive widening of the scaffold during the build process. Consideration was also given to the loadings on each standard, as the full scaffold structure needed to be based along the side walls at 45 degrees. This considered approach saved a weeks build time and over 450 man-hours.



### Head Office

Enigma Industrial Services Ltd  
Hawthorn House  
Woodlands Park  
Ashton Road  
Newton-le-Willows  
WA12 0HF

Tel: 0330 678 1199  
Email: [info@enigma-is.com](mailto:info@enigma-is.com)  
Web: [www.enigma-is.com](http://www.enigma-is.com)

