



## Solvay

The Solvay site was established in 1851 and manufactures a variety of phosphorus-based chemicals, offering sustainable solutions across a broad range of applications.

Location: **Oldbury**

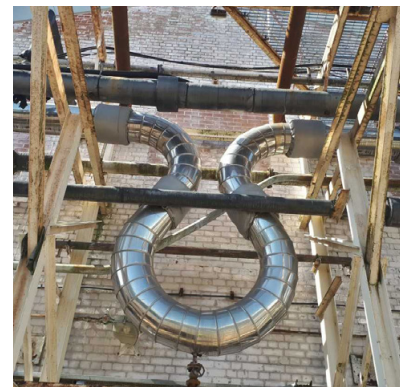


## Solvay Manufacturing Site

The Solvay site was established in 1851 and manufactures a variety of phosphorus-based chemicals offering sustainable solutions across a broad range of applications including pharmaceuticals, paints, detergents water treatment chemicals, agriculture and flame retardants. Our partnership with Solvay extends for over 25 years.

### Project Summary

We provide scaffolding, insulation and fabrication for both site maintenance and project programmes. Our experienced site team deliver safe solutions to a variety of hazardous and sensitive area's. We also provide a bespoke insulation offering serviced by our on-site fabrication facility.



### Value Engineering

Due to the sites production demands, we support the site with design backed solutions which takes account of the sites access and egress planning for hazardous and sensitive areas. We also supply cover for emergency work, twenty-four hours a day, 365 days a year.

### Head Office

Enigma Industrial Services Ltd  
Hawthorn House  
Woodlands Park  
Ashton Road  
Newton-le-Willows  
WA12 0HF

Tel: 0330 678 1199  
Email: [info@enigma-is.com](mailto:info@enigma-is.com)  
Web: [www.enigma-is.com](http://www.enigma-is.com)

