

## The Ropeworks

Is a significant residential development in the Leith area of Edinburgh. It comprises of various phases, including private and affordable flatted blocks between 5 and 8 storeys high.

Location: **Edinburgh**



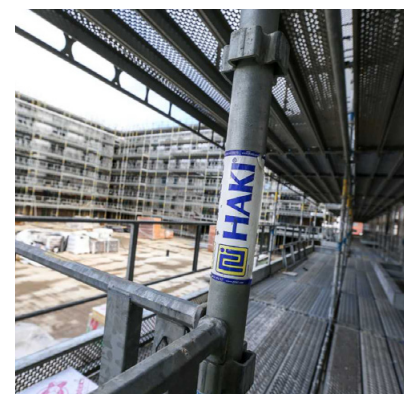


## The Ropeworks

The Ropeworks project is a significant residential development in the Leith area of Edinburgh. It comprises of various phases, including private and affordable flatted blocks between 5 and 8 storeys high.

### Project Summary

To provide access via a full perimeter independent scaffold to various and concurrent phases using system scaffold (in this case HAKI).



### Value Engineering

The construction method of the blocks was via a steel frame to the first floor with Metsec construction after that, resulting in a much faster installation. The benefit of utilising the HAKI 3.0m long bay dimension system ensured the scaffold erection kept pace with the fast-paced construction programme.

#### Head Office

Enigma Industrial Services Ltd  
Hawthorn House  
Woodlands Park  
Ashton Road  
Newton-le-Willows  
WA12 0HF

Tel: 0330 678 1199  
Email: [info@enigma-is.com](mailto:info@enigma-is.com)  
Web: [www.enigma-is.com](http://www.enigma-is.com)

