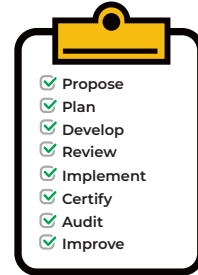


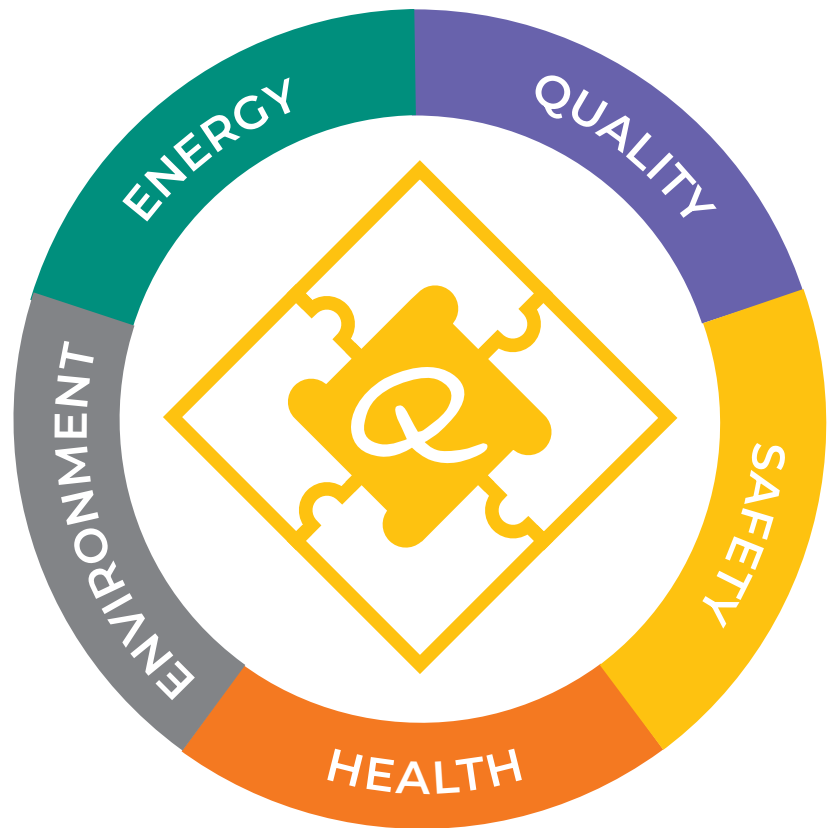
The QSHE Policy is endorsed by the Enigma Board and regularly reviewed. The structured policy outlines our processes to ensure delivery of a successful health and safety culture. Extending out from our policy is our Enigma Integrated Management System (EIMS for short).



### EIMS

Enigma Integrated Management System™

During the past several year's Enigma Industrial Services have received over several British Safety Council 5 Star Audit Awards, 2 British Safety Council Sword of Honour and 120 RoSPA awards. The organisation has received these achievements based on the recognition for systems, standards and training.



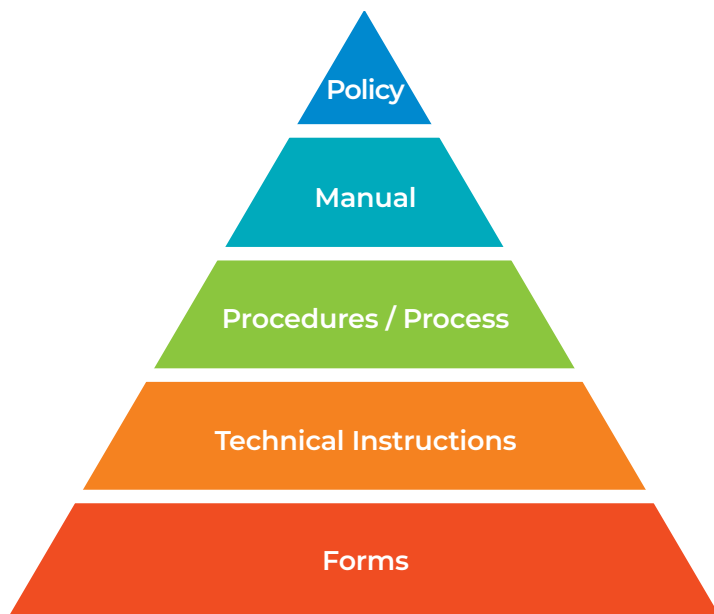
**Our Management System is certificated by British Standards Institute to:**

- ISO9001:2015 Quality Management Systems
- ISO45001:2018 Occupational Health and Safety (OH&S) Management System
- ISO14001:2015 Environmental Management System
- ISO50001:2018 Energy Management System



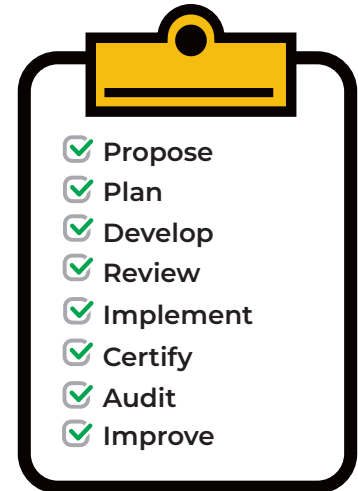
The Enigma Integrated Management System objectives include:

- Prevention of injury and ill health of interested parties who may be affected by our activities;
- Contributing to the effective protection of the environment and promoting the use of sustainable resources;
- The development and provision of products which are safe and fit for purpose;
- Provision of appropriate resources to ensure that adequate information, training and supervision are provided to employees, contractors and interested parties relating to quality, health, safety, and environmental issues;
- Ensuring the effective management of risks during the design, construction, operation and maintenance phases;
- Reviewed regularly to ensure that our IMS meets quality, health, safety and environmental standards and facilitates the setting of relevant realistic objectives and targets; as well as the monitoring of performance;
- Developing a structured approach to identifying and targeting improvements.



## EIMS

Enigma Integrated Management System™



### System Management

Maintain complete control of company settings, location management, user permissions and escalation settings.

### Action Management

Record corrective, preventative and continuous improvement actions to prevent incident re-occurrence.

### Real-time Reports

Real-time notifications of incidents and actions that escalate through the organisation structure ensuring everyone remains fully informed.

### ISO Accredited Management System

Certified with ISO45001 requirements.

### Head Office

Enigma Industrial Services Ltd  
Hawthorn House  
Woodlands Park  
Ashton Road  
Newton-le-Willows  
WA12 0HF

Tel: 0330 678 1199  
Email: [info@enigma-is.com](mailto:info@enigma-is.com)  
Web: [www.enigma-is.com](http://www.enigma-is.com)

