



## Promoting a safety first organisation with a Positive Intervention programme

Workplace health, safety and wellbeing interventions are commonly focused on addressing an individual behaviour (unsafe act) and / or environmental (unsafe condition). With the Positive Intervention programme we reinforce a **'Stop Work'** process until suitable control measures have been implemented to permit continuation of work safely.

### Management Reporting Features

- View performance at business, division and contract level.
- Real time management reports.
- Identify workforce involvement.
- Identify immediate causation and root cause.



### Features & Benefits

- Mobile 'App' functionality simplifying at-risk reporting, unsafe acts and unsafe conditions.
- Identify trends to enable effective communication.
- Improved safety practices of observers and workforce.
- Increased situational awareness.
- Provides feedback on the effectiveness of safety processes.
- Provides a baseline to set improvement goals.



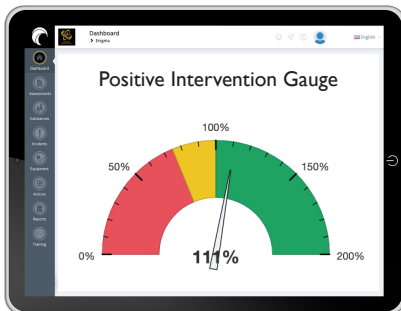
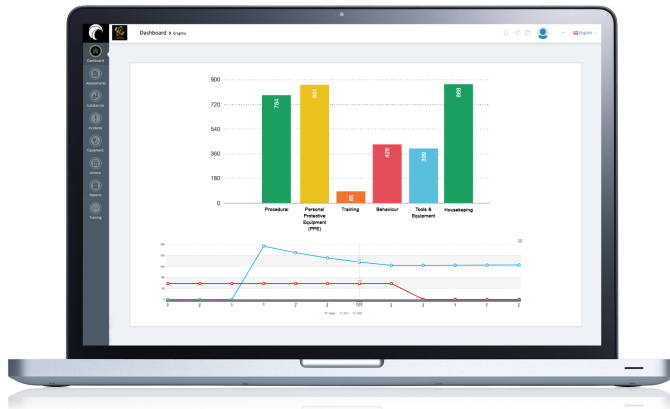


● INSIGHT

● INNOVATION

● INVESTMENT

● INTEGRITY



### Positive Intervention Performance Summary



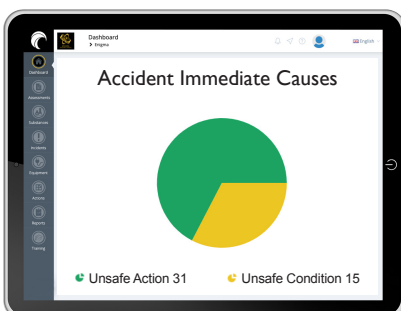
The Positive Intervention programme can provide positive rewards to change unsafe behaviours, reduce job-related injuries, minimise lost production hours, and improve workplace morale all essential ingredients for creating a strong safety culture.



### Persons Involved



The Positive Intervention programme aims to promote safe work practices and work conditions. By promoting a sense of shared safety ownership responsibility with a collaborative approach for the workforce, contractors and clients.



### Immediate Cause



In the event where at-risk behaviour or working conditions leading to a hazardous situation are identified. The observer should intervene immediately to stop the behaviour or work process to prevent injuries. By discussing the "immediate cause", corrective action can be implemented to ensure the event is safe. The reported intervention also enables trend analysis and awareness communication to be created.

## EIMS

Enigma Integrated  
Management System™

### System Management

Maintain complete control of company settings, location management, user permissions and escalation settings.

### Action Management

Record corrective, preventative and continuous improvement actions to prevent incident re-occurrence.

### Real-time Reports

Real-time notifications of incidents and actions that escalate through the organisation structure ensuring everyone remains fully informed.

### ISO Accredited Management System

Certified with ISO45001 requirements.

